

# Technical Data Sheet

CODE 12012

**ARIETT I**



## Certifications



IMQ Performance



UKCA

---

## TECHNICAL AND PERFORMANCE DATA

Frequency (Hz)	50	Max ambient temperature for continuous operation (°C)	40
Insulation class	II°	Voltage (V)	220-240
IP	X4	Weight (Kg)	1,9
Max absorbed current (A)	0,13	Max pressure (Pa)	108
Max absorbed power (W)	19	Max pressure at Max speed (mmH2O)	11
		Sound pressure Lp [dB (A)] at 3 m	43

## PER INFORMAZIONI / FOR INFORMATION

### ITALY

Pre Sales:

[prevendita@vortice-italy.com](mailto:prevendita@vortice-italy.com)

After Sales:

[postvendita@vortice-italy.com](mailto:postvendita@vortice-italy.com)

### UNITED KINGDOM & REP. OF

IRELAND

Sales Dept:

[sales@vortice.ltd.uk](mailto:sales@vortice.ltd.uk)

Technical Dept:

[technical@vortice.ltd.uk](mailto:technical@vortice.ltd.uk)

### OTHER COUNTRIES

Sales Dept:

[export@vortice-italy.com](mailto:export@vortice-italy.com)

After Sales:

[after-sales@vortice-italy.com](mailto:after-sales@vortice-italy.com)

# Technical Data Sheet

CODE 12012

**ARIETT I**



## DESCRIPTION

- Suitable for use in bathrooms, shower rooms and toilets. Complete with brackets and template, they are designed to be quickly and easily installed by one person. They also have the option of vertical or horizontal extract points.

- Built-in version.

- Powerful yet very quiet in operation, the unobtrusive styling provides all necessary extract requirements, while complementing the decor of the room. The fans meet all necessary requirements of F1 building regulations.

- All fans have the optional side or rear exit low profile connector, or high profile connector.

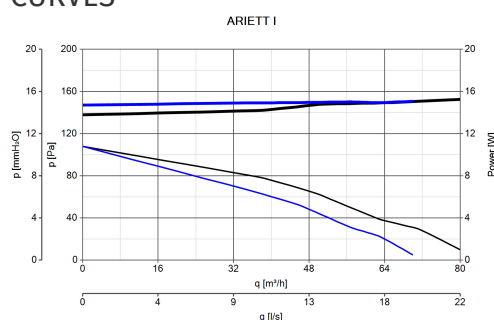
- These have been specifically designed for ceilings where the void area is restricted, for example, down stairs or between the floors in flats. In addition, there is a choice of fixing kits available. A template is supplied to allow easy cutting of the access hole.

- Developed with UK house builders and contractors.

- Conforms to the following standards: CEI EN 60335-2-80 (Part 2: Particular requirements for fans), CEI EN 60529 (Code IP).

Design: F. Trabucco & Associates

## CURVES



## ACCESSORIES



**C 1.5**  
**(COMANDO EL.**  
**1.5 A)**

Code 12966



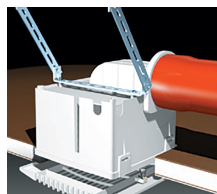
**SCNRB**  
**SCAT.COM.NON**  
**REV.INCASSO**

Code 12971



**KIT**  
**CONTROSOFFITTATURE**

Code 22823



**RACCORDO**  
**ORIZZONTALE**



**RACCORDO**  
**ORIZZONTALE**

PER INFORMAZIONI / FOR INFORMATION

ITALY

Pre Sales:  
prevendita@vortice-italy.com

After Sales:  
postvendita@vortice-italy.com

UNITED KINGDOM & REP. OF

IRELAND

Sales Dept:  
sales@vortice.ltd.uk

Technical Dept:  
technical@vortice.ltd.uk

OTHER COUNTRIES

Sales Dept:  
export@vortice-italy.com

After Sales:  
after-sales@vortice-italy.com