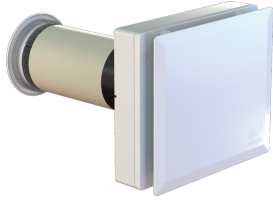


Technical Data Sheet

CODE 12434

VORT HRW 30 MONO EVO

Decentralised heat recovery units



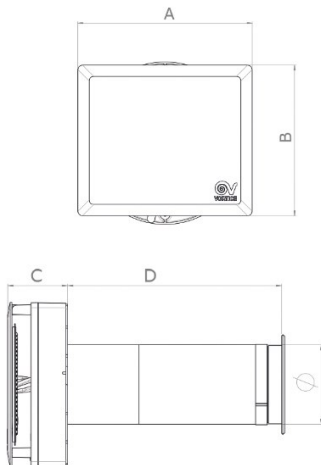
Certifications



TECHNICAL AND PERFORMANCE DATA

| | | | |
|---|---------------|--|------|
| Filter class | ISOCoarse 65% | Max airflow at Max speed (m ³ /h) | 38 |
| Frequency (Hz) | 50-60 | Max pressure at Max speed (mmH2O) | 13,7 |
| Insulation class | II° | Max pressure at Max speed (Pa) | 130 |
| Max absorbed current (A) | 0,04 | Max thermal efficiency (%) | 90 |
| Max absorbed power (W) | 4 | Pressure at 1st speed (mmH2O) | 1 |
| Max ambient temperature for continuous operation (°C) | 30 | Pressure at 1st speed (Pa) | 10 |
| Nominal diameter (mm) | 100 | Sound power LWA at Max speed [dB (A)] | 66,8 |
| Voltage (V) | 220-240 | Sound power LWA at Min speed [dB (A)] | 36,6 |
| Weight (Kg) | 3,10 | Sound power at Mid speed LWA [dB(A)] | 49,5 |
| Airflow at 1st speed (l/s) | 1,7 | Sound pressure at 3 m - min speed Lp [dB (A)] 3m - min speed | 19,1 |
| Airflow at 1st speed (m ³ /h) | 6 | Sound pressure at 3m at Max speed Lp [dB (A)] | 49,2 |
| Max airflow at Max speed (l/s) | 10,5 | Sound pressure Lp at 3m at Mid speed [dB (A)] | 32,0 |

DIMENSIONS



| | |
|-------------|-----|
| ∅ (mm) | 97 |
| Size A (mm) | 231 |
| Size B (mm) | 200 |
| Size C (mm) | 73 |
| Size D (mm) | 260 |

PER INFORMAZIONI / FOR INFORMATION

ITALY

Pre Sales:

prevendita@vortice-italy.com

After Sales:

postvendita@vortice-italy.com

UNITED KINGDOM & REP. OF

IRELAND

Sales Dept:

sales@vortice.ltd.uk

Technical Dept:

technical@vortice.ltd.uk

OTHER COUNTRIES

Sales Dept:

export@vortice-italy.com

After Sales:

after-sales@vortice-italy.com

Technical Data Sheet

CODE 12434

VORT HRW 30 MONO EVO

Decentralised heat recovery units



DESCRIPTION

Decentralized heat recovery unit, for installation in residential and commercial premises of new buildings or those subject to renovation for energy efficiency. Ideal, as well as to ensure proper air exchange, also to prevent excess humidity in the room and mold growth on the walls.

- Shockproof and anti-UV plastic resin structure.
- Nominal diameter: 100 mm.
- Ceramic exchanger with hexagonal cells. High heat exchange efficiency (up to 90% at minimum air flow).
- High efficiency EC motor fan; five operating speeds, to maximize performance when needed, or to minimize noise and consumption.
- On board controls to switch on/off the machine, to adjust the operating mode and for the fan speed selection.
- Three different operating modes:
- Continuous ventilation with heat recovery: the product cyclically extracts and introduces air to and from the room, recovering the

- energy stored in the exchanger;
- Ventilation with air extraction only: stale air is extracted from the environment;
- Ventilation with air intake only: the product introduces fresh air into the environment.
- Two air filters, a 65% IsoCoarse and a pre-filter for dust, both easily removable for washing.
- LED light for filters status placed in the lower part of the chassis, immediately behind the front cover.
- Mechanical quick closing system of the air delivery integrated into the product chassis.
- External rubber grille, which can be installed from the outside using plugs or from the inside, through the hole in the wall.
- Insect mesh, which can be installed into the duct from inside.
- Possibility of connection to remote sensors C-TEMP and C-HCS for the automatic management of the product.

ACCESSORIES



**TUBO PVC
D.100 L=700
(HRW 30)**
Code 21879



MWS D.100
Code 21883



WA Ø 100
Code 21884



**KIT FTR ISO
COARSE 65%
(G3) D.98X10**
Code 21891

PER INFORMAZIONI / FOR INFORMATION

ITALY

Pre Sales:
prevendita@vortice-italy.com
After Sales:
postvendita@vortice-italy.com

UNITED KINGDOM & REP. OF

IRELAND
Sales Dept:
sales@vortice.ltd.uk
Technical Dept:
technical@vortice.ltd.uk

OTHER COUNTRIES

Sales Dept:
export@vortice-italy.com
After Sales:
after-sales@vortice-italy.com