

Technical Data Sheet

CODE 16186

CA 250 MD E RF

Centrifugal duct fans for roof mounting



Certifications



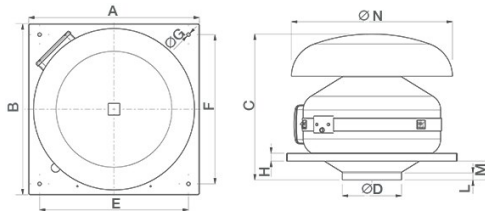
IMQ Performance



TECHNICAL AND PERFORMANCE DATA

Frequency (Hz)	50-60	Airflow at 1st speed (l/s)	106.9
Insulation class	II°	Airflow at 1st speed (m³/h)	385
IP	44	Max airflow at Max speed (l/s)	236.1
Max absorbed current at Max speed (A)	0,57	Max airflow at Max speed (m³/h)	850
Max absorbed current at Min speed (A)	0.47	Max pressure at Max speed (mmH2O)	56.3
Max absorbed Power at 60 Hz (W)	175	Max pressure at Max speed (Pa)	552.2
Max absorbed power at Max speed (W)	130	Max RPM	2565
Max ambient temperature for continuous operation (°C)	50	Min RPM	1195
Nominal diameter (mm)	250	Pressure at 1st speed (mmH2O)	39.1
Power absorbed at 1st speed (W)	48	Pressure at 1st speed (Pa)	384.1
Voltage (V)	220-240	Sound pressure at 3 m - min speed Lp [dB (A)] 3m - min speed	28.6
Weight (Kg)	10	Sound pressure at 3m at Max speed Lp [dB (A)]	43.8

DIMENSIONS



Size A (mm)	489
Size B (mm)	489
Size C (mm)	367
Size D (mm)	∅ 247
Size E (mm)	435
Size F (mm)	435
Size G (mm)	∅ 9
Size H (mm)	20
Size L (mm)	38
Size M (mm)	41
Size N (mm)	∅ 534
Size O (mm)	220

PER INFORMAZIONI / FOR INFORMATION

ITALY

Pre Sales:

prevendita@vortice-italy.com

After Sales:

postvendita@vortice-italy.com

UNITED KINGDOM & REP. OF

IRELAND

Sales Dept:

sales@vortice.ltd.uk

Technical Dept:

technical@vortice.ltd.uk

OTHER COUNTRIES

Sales Dept:

export@vortice-italy.com

After Sales:

after-sales@vortice-italy.com

Technical Data Sheet

CODE 16186

CA 250 MD E RF

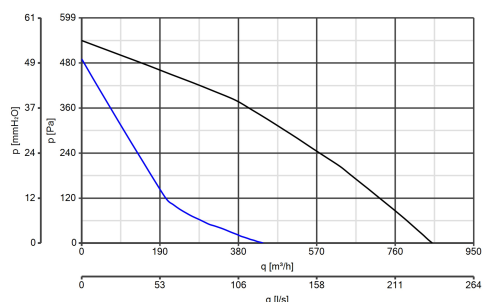
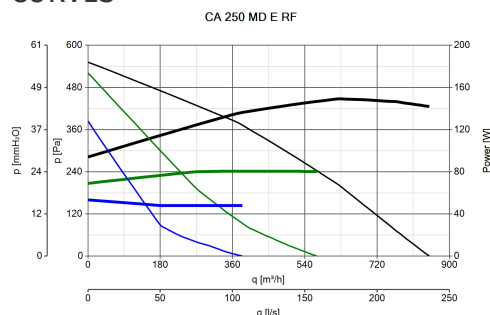
Centrifugal duct fans for roof mounting



DESCRIPTION

- Pickled and phosphated steel housing/roof mounting plate with polyester powder-coated finish, resistant to the aggressive action of atmospheric agents.
- Nominal diameter 250 mm.
- 3 speed fan through TRIO-CA optional control (cod. 12869), consisting of:
 - External rotor AC motor with thermal overload cutout and shaft turning in ball bearings,
 - backward curved impeller.
- Operation controllable by remote sensors monitoring: Temperature, Relative Humidity, Smoke and Presence.
- Zinc-coated steel fixing brackets.

CURVES



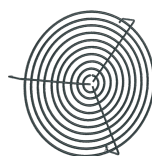
ACCESSORIES



TRIO-CA
Code 12869



**KIT SCB
(TRASF.E.C.)**
Code 22481



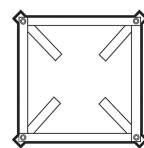
**CA-G 250
(GRIGLIA DI
PROTEZIONE)**
Code 22770



**C 1.5
(COMANDO EL.
1.5 A)**
Code 12966
PER INFORMAZIONI / FOR INFORMATION



**C 2.5
(COMANDO EL.
2.5 A)**
Code 12967



**CARF-C
250/315
(CONTROTELAIO
DI BASE)**



C TEMP
Code 12992

ITALY
Pre Sales:
prevendita@vortice-italy.com
After Sales:
postvendita@vortice-italy.com

UNITED KINGDOM & REP. OF
IRELAND
Sales Dept:
sales@vortice.ltd.uk
Technical Dept:
technical@vortice.ltd.uk

OTHER COUNTRIES
Sales Dept:
export@vortice-italy.com
After Sales:
after-sales@vortice-italy.com



C SMOKE

Code 12993



C HCS

Code 12994



C PIR

Code 12998



C TIMER

Code 12999