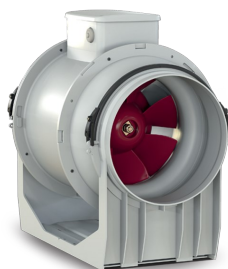


# Technical Data Sheet

CODE 17169

## LINEO 315 ES

Energy saving mixed flow extractor fans



### Certifications



### TECHNICAL AND PERFORMANCE DATA

Frequency (Hz)	50-60	Max airflow at 8V (l/s)	644,4
Insulation class	II°	Max airflow at 8V (m³/h)	2320
IP	45	Max pressure at 10V (Pa)	421,7
Max absorbed current at 10V (A)	1,75	Max pressure at 4V (Pa)	143,2
Max absorbed current at 4V (A)	0,37	Max pressure at 6V (Pa)	214,8
Max absorbed current at 6V (A)	0,63	Max pressure at 10V (mmH2O)	43
Max absorbed current at 8V (A)	1,32	Max pressure at 4V (mmH2O)	14,6
Max absorbed power at 10V (W)	230	Max pressure at 6V (mmH2O)	21,9
Max absorbed power at 4V (W)	45	Max pressure at 8V (mmH2O)	38,6
Max absorbed power at 6V (W)	77	Max pressure at 8V (Pa)	378,6
Max absorbed power at 8V (W)	170	RPM at 10V	2370
Max ambient temperature for continuous operation (°C)	50	RPM at 4V	1300
Nominal diameter (mm)	315	RPM at 6V	1600
Voltage (V)	220-240	RPM at 8V	2130
Weight (Kg)	9,2	Sound power at extract side at 10V speed LWA [dB (A)]	92,8
Breakout sound power at 10V Lw [dB (A)]	68,1	Sound power at extract side at 4V speed LWA [dB (A)]	83,1
Breakout sound power at 4V Lw [dB (A)]	63	Sound power at extract side at 6V speed LWA [dB (A)]	88
Breakout sound power at 6V Lw [dB (A)]	64,6	Sound power at extract side at 8V speed LWA [dB (A)]	90,7
Breakout sound power at 8V Lw [dB (A)]	65,3	Sound power at supply side at 10V speed LWA [dB (A)]	90
Breakout sound pressure at 3m at 10V Lp [dB (A)]	47,5	Sound power at supply side at 4V speed LWA [dB (A)]	80,8
Breakout sound pressure at 3m at 4V Lp [dB (A)]	42,5	Sound power at supply side at 6V speed LWA [dB (A)]	88,2
Breakout sound pressure at 3m at 6V Lp [dB (A)]	44	Sound power at supply side at 8V speed LWA [dB (A)]	88,8
Breakout sound pressure at 3m at 8V Lp [dB (A)]	44,8	Sound pressure at extract side at 3m at 10V Lp [dB (A)]	75,3
Max airflow at 10V (l/s)	729,2	Sound pressure at extract side at 3m at 4V Lp [dB (A)]	65,6
Max airflow at 10V (m³/h)	2625	Sound pressure at extract side at 3m at 6V Lp [dB (A)]	70,4
Max airflow at 4V (l/s)	393,1	Sound pressure at extract side at 3m at 8V Lp [dB (A)]	73,2
Max airflow at 4V (m³/h)	1415	Sound pressure at supply side at 3m at 10V Lp [dB (A)]	72,4
Max airflow at 6V (l/s)	483,3	Sound pressure at supply side at 3m at 4V Lp [dB (A)]	63,3
Max airflow at 6V (m³/h)	1740	Sound pressure at supply side at 3m at 6V Lp [dB (A)]	70,6
			71,2

### PER INFORMAZIONI / FOR INFORMATION

ITALY  
Pre Sales:

UNITED KINGDOM & REP. OF  
IRELAND  
Sales Dept:

OTHER COUNTRIES  
Sales Dept:

prevendita@vortice-italy.com  
After Sales:  
postvendita@vortice-italy.com

sales@vortice.ltd.uk  
Technical Dept:  
technical@vortice.ltd.uk

export@vortice-italy.com  
After Sales:  
after-sales@vortice-italy.com

---

# Technical Data Sheet

CODE 17169

## LINEO 315 ES

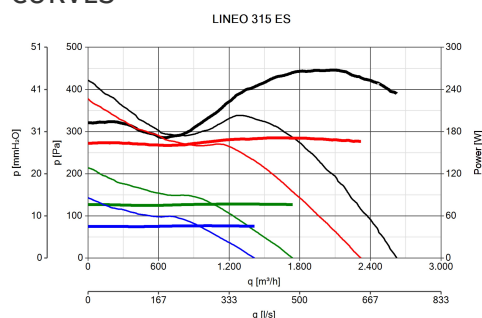
Energy saving mixed flow extractor fans



### DESCRIPTION

- Enclosures made of fire resistant plastic resin, E2 class, according with ISO EN 11925-2: 2010, in areas close to motor and electrical components.
- Nominal diameter 315 mm.
- EC (brushless) motor, thermally protected, with shaft mounted on ball bearing supports, coupled with a centrifugal impeller.
- High water resistance: IPX5 (if installed in a duct).
- Equipped with a thermal fuse overheating safety device.
- Speed adjustable through potentiometer (0-10V signal) or two-speed switch (to be set at the installation in a preset range).

### CURVES



### ACCESSORIES



#### C TEMP

Code 12992



#### C SMOKE

Code 12993



#### C HCS

Code 12994



#### C PIR

Code 12998



#### C TIMER

Code 12999



#### POT-IT

Code 12826



#### POT

Code 12828

### PER INFORMAZIONI / FOR INFORMATION

#### ITALY

Pre Sales:  
[prevendita@vortice-italy.com](mailto:prevendita@vortice-italy.com)  
After Sales:  
[postvendita@vortice-italy.com](mailto:postvendita@vortice-italy.com)

#### UNITED KINGDOM & REP. OF IRELAND

Sales Dept:  
[sales@vortice.ltd.uk](mailto:sales@vortice.ltd.uk)  
Technical Dept:  
[technical@vortice.ltd.uk](mailto:technical@vortice.ltd.uk)

#### OTHER COUNTRIES

Sales Dept:  
[export@vortice-italy.com](mailto:export@vortice-italy.com)  
After Sales:  
[after-sales@vortice-italy.com](mailto:after-sales@vortice-italy.com)