

Technical Data Sheet

CODE 42263

MPC-E 254 M

Medium-pressure long cased axial fans



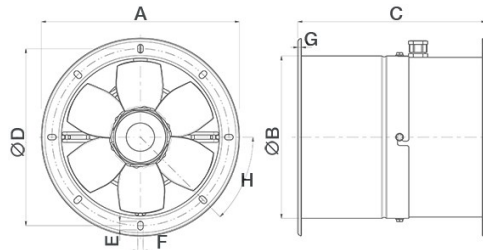
Certifications



TECHNICAL AND PERFORMANCE DATA

Frequency (Hz)	50	Number of poles	4
Insulation class	I°	Voltage (V)	230
IP	X4	Weight (Kg)	8,2
Max absorbed current (A)	0,32	Max airflow (l/s)	328
Max absorbed power (W)	70	Max airflow (m³/h)	1180
Max ambient temperature for continuous operation (°C)	70	Max pressure (mmH2O)	9,0
Min continuous operation room temperature (°C)	-25	Max pressure (Pa)	82
Motor ATEX marking	55	RPM	1460
Nominal diameter (mm)	250	Sound power Lw [dB(A)]	45,8
Number of phases (Ph)	1	Sound pressure Lp [dB (A)] at 3 m	25,3

DIMENSIONS



Size A (mm)	∅ 319
Size B (mm)	∅ 264
Size C (mm)	300
Size D (mm)	∅ 292
Size E (mm)	14
Size F (mm)	9
Size G (mm)	4
Size H (mm)	45°

PER INFORMAZIONI / FOR INFORMATION

ITALY

Pre Sales:

prevendita@vortice-italy.com

After Sales:

postvendita@vortice-italy.com

UNITED KINGDOM & REP. OF

IRELAND

Sales Dept:

sales@vortice.ltd.uk

Technical Dept:

technical@vortice.ltd.uk

OTHER COUNTRIES

Sales Dept:

export@vortice-italy.com

After Sales:

after-sales@vortice-italy.com

Technical Data Sheet

CODE 42263

MPC-E 254 M

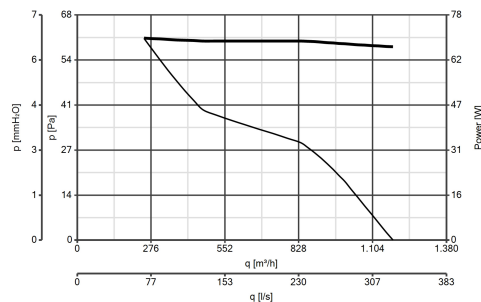
Medium-pressure long cased axial fans



DESCRIPTION

- Nominal diameter 250 mm
- 2 rolled steel flange sections, welded, phosphated and polyester powder coated in practical grey colour with hammered effect finish, guaranteeing long-term resistance to atmospheric agents.
- 1 speed single phase AC motor with shaft turning in double shielded ball bearings, insulation class F.
- Maximum air flow: 1,180 m³/h.
- Impeller with 6 wing profile blades, dynamically balanced (UNI ISO 1940 – Balancing class 6.3), optimized to deliver maximum performance and low noise levels, moulded from filled polypropylene for superior dimensional stability and resistance to atmospheric agents, and keyed to a diecast aluminium hub.
- Vortice speed controller.

CURVES



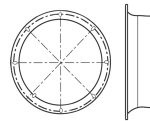
ACCESSORIES



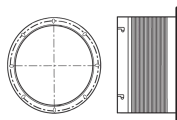
IRM 30
Code 12921



IREM 3 CD
99250080
Code 12931



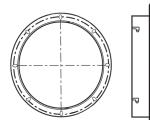
MPC BO 250
(BOCCAGLIO)
Code 22535



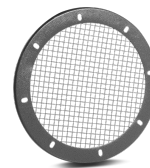
MPC RA 250
(RACCORDO FLESSIBILE)
Code 22516



MPC SU 250
(SUPPORTO)
Code 22531



MPC FL 250
(FLANGIA)
Code 22523



MPC RP 250
(RETE DI PROTEZIONE)
Code 22527

PER INFORMAZIONI / FOR INFORMATION

ITALY
Pre Sales:
prevendita@vortice-italy.com
After Sales:
postvendita@vortice-italy.com

UNITED KINGDOM & REP. OF IRELAND
Sales Dept:
sales@vortice.ltd.uk
Technical Dept:
technical@vortice.ltd.uk

OTHER COUNTRIES
Sales Dept:
export@vortice-italy.com
After Sales:
after-sales@vortice-italy.com