

# Technical Data Sheet

CODE 42328

## MPC-E 404 T

Medium-pressure long cased axial fans



### Certifications

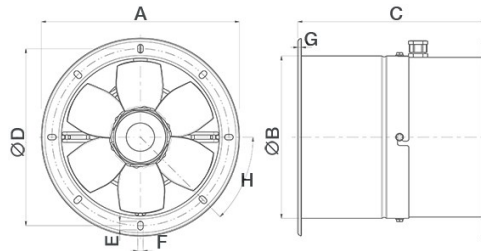
CE CE

EAC EAC

### TECHNICAL AND PERFORMANCE DATA

Frequency (Hz)	50	Number of poles	4
Insulation class	I°	Voltage (V)	400
IP	X4	Weight (Kg)	14,0
Max absorbed current (A)	0.40	Max airflow (l/s)	1305
Max absorbed power (W)	225	Max airflow (m³/h)	4700
Max ambient temperature for continuous operation (°C)	70	Max pressure (mmH2O)	16.5
Min continuous operation room temperature (°C)	-25	Max pressure (Pa)	162
Nominal diameter (mm)	400	RPM	1365
Number of phases (Ph)	3	Sound power Lw [dB(A)]	67.4
		Sound pressure Lp [dB (A)] at 3 m	46.9

### DIMENSIONS



Size A (mm)	ø 475
Size B (mm)	ø 418
Size C (mm)	330
Size D (mm)	ø 448
Size E (mm)	14
Size F (mm)	9
Size G (mm)	4
Size H (mm)	45°

### PER INFORMAZIONI / FOR INFORMATION

#### ITALY

Pre Sales:

prevendita@vortice-italy.com

After Sales:

postvendita@vortice-italy.com

#### UNITED KINGDOM & REP. OF

IRELAND

Sales Dept:

sales@vortice.ltd.uk

Technical Dept:

technical@vortice.ltd.uk

#### OTHER COUNTRIES

Sales Dept:

export@vortice-italy.com

After Sales:

after-sales@vortice-italy.com

# Technical Data Sheet

CODE 42328

## MPC-E 404 T

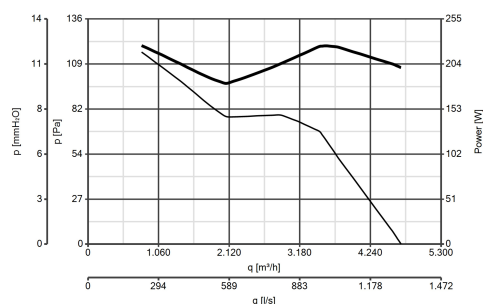
Medium-pressure long cased axial fans



### DESCRIPTION

- Nominal diameter 400 mm
- 2 rolled steel flange sections, welded, phosphated and polyester powder coated in practical grey colour with hammered effect finish, guaranteeing long-term resistance to atmospheric agents.
- 1 speed three-phase AC motor with shaft turning in double shielded ball bearings, insulation class F.
- Maximum air flow: 5,200 m<sup>3</sup>/h.
- Impeller with 6 wing profile blades, dynamically balanced (UNI ISO 1940 – Balancing class 6.3), optimized to deliver maximum performance and low noise levels, moulded from filled polypropylene for superior dimensional stability and resistance to atmospheric agents, and keyed to a diecast aluminium hub.
- Vortice speed controller.

### CURVES



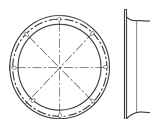
### ACCESSORIES



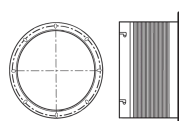
**IRT 15**  
Code 12923



**IRET 6**  
Code 12934



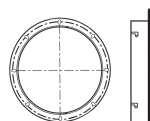
**MPC BO 400  
(BOCCAGLIO)**  
Code 22538



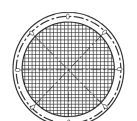
**MPC RA 400  
(RACCORDO  
FLESSIBILE)**  
Code 22519



**MPC SU 400  
(SUPPORTO)**  
Code 22534



**MPC FL 400  
(FLANGIA)**  
Code 22526



**MPC RP 400  
(RETE DI  
PROTEZIONE)**  
Code 22530

### PER INFORMAZIONI / FOR INFORMATION

ITALY  
Pre Sales:  
prevendita@vortice-italy.com  
After Sales:  
postvendita@vortice-italy.com

UNITED KINGDOM & REP. OF  
IRELAND  
Sales Dept:  
sales@vortice.ltd.uk  
Technical Dept:  
technical@vortice.ltd.uk

OTHER COUNTRIES  
Sales Dept:  
export@vortice-italy.com  
After Sales:  
after-sales@vortice-italy.com