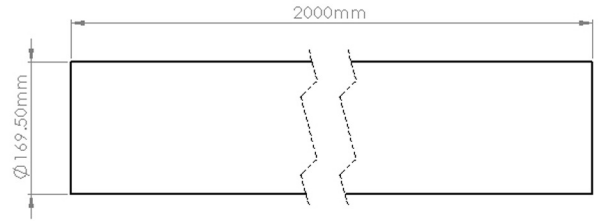
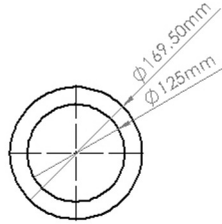


Technical Data Sheet

Code 46734

125mm x 2m Round Thermal Self Seal Duct



SPECIFICATION DETAILS

The Self-Seal Thermal 2m length of insulated duct is manufactured from graphite impregnated expanded polystyrene (EPS) with a density of 25kg/m³ and provides a free area of 12,273 mm². The product is supplied with a single Duct to Duct connector to fit into the next straight length of duct. The open end of the duct allows a push-fit over a 125mm Fan Spigot or it can be cut to length to insert a Duct to Fitting Connector to push, click and lock into the female coupling housed in every Fitting. The Duct to Duct connections and Duct to Fitting Connectors are manufactured from prime quality High Impact Polystyrene.

The EPS material is fully tested to meet the thermal conductivity requirements of BASF-EN13163 to assist with the prevention of condensation and is flame retardant to DIN 4102-B1.

Self-Seal Thermal Ducting exceeds the current UK Domestic Ventilation Regulation requirements of Part F 2010 Domestic Ventilation Compliance Guide and NHBC Guidance Document Chapter 3.2 and provides a thermal conductivity of 0.03 W/mK which at 20mm thickness gives a thermal resistance or R-value of 0.666 m²K/W.

The patent pending push, click and lock mechanism provides a low leakage solution which exceeds the requirements set out in DW/143 Class A leakage test and DW/154 ductwork standards.

The Self-Seal Thermal is compliant with the requirements outlined in the Energy performance characteristics database for use in SAP with MVHR and MEV supply and extract ventilation systems.

Size: 125mm Diameter x 2m

For use with: Vortice Ducting

Box quantity: 6

Individual Weight: 682g

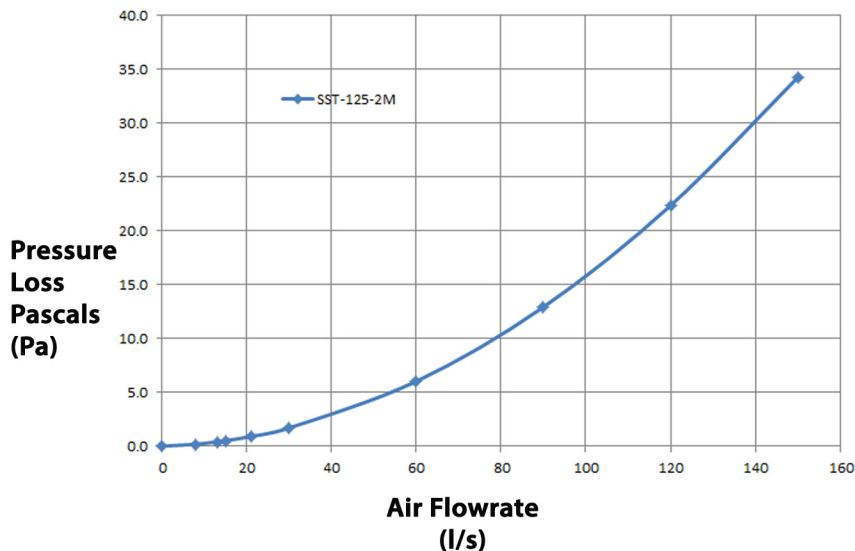
Colour: Grey

Thermal Resistance: 0.666 m²K/W

Thermal Conductivity: 0.03 W/mK

MAX/MIN OPERATING TEMPERATURES + 60°C to - 15°C

PERFORMANCE CURVE



AIRFLOW

8 l/s

13 l/s

21 l/s

30 l/s

60 l/s

120 l/s

RESISTANCE

0.20 pa

0.40 pa

0.90 pa

1.70 pa

6.00 pa

22.30 pa

Vortice Limited
Beeches House
Eastern Avenue
Burton Upon Trent
DE13 0BB
Tel: 01283 492949
Fax: 01283 544121
sales@vortice.ltd.uk
www.vortice.ltd.uk