

## BD 10/10 M4 0,59kW (251320260)

### GENERAL DATA



#### FAN DOUBLE INLET

##### MANUFACTURING FEATURES:

- Galvanised steel sheet housing.
- Polyamide impeller reinforced with fibreglass in models 7/7, 9/9, 10/10 and 12/12. The impeller of the rest of the models are made of galvanised steel sheet.
- Double inlet forward curved impeller in all models.
- Supplied with mounting feet (included in price).
- Exclusive system Casals fixing motor and turbine fan by flexible arms silent blocks to avoid any vibration. Arms in compliance with ROHS regulations 2002/95 / EC (Restriction of Hazardous Substances in electrical and electronic equipment)
- Closed motors specially designed Casals: extruded aluminum housing, all protected inside the terminal box on the motor IP 65 protection and motor with IP54 protection and Class F insulation standard voltages: 230V 50Hz in single phase and 230/400V 50Hz three-phase.
- Single phase motors with controllable voltage speed. Three phase motors controllable using a frequency speed controller

##### APPLICATIONS:

Designed for assembly in equipment:

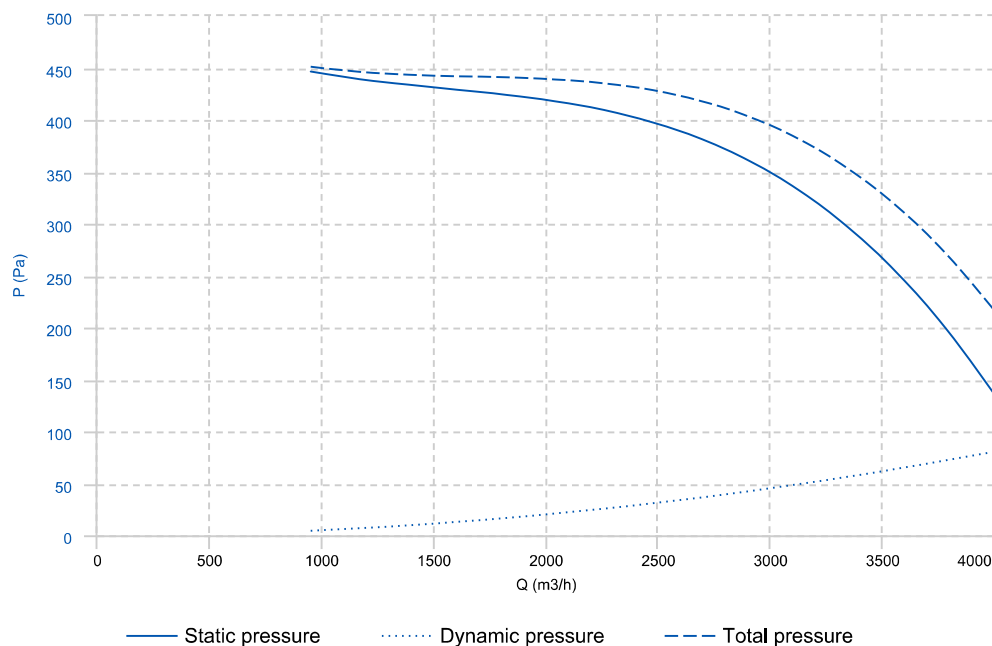
- Ventilation boxes and air handling units.
- Centrifugal heaters.
- Industrial and professional kitchen hoods.
- Maximum working temperature: 50°C for single phase motors and 60°C for three phase motors.

##### UNDER REQUEST

- Impeller made of galvanized steel sheet.
- MBI assembled

\* While stocks last.

### PERFORMANCE CURVE



## TECHNICAL DATA

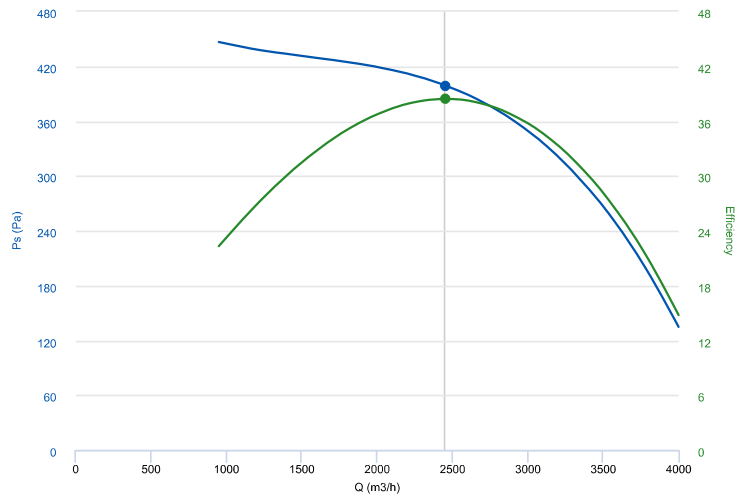
### Fan

RPM	1340	Approx. weight	22 kg	Max. Flow	4010 m <sup>3</sup> /h
-----	------	----------------	-------	-----------	------------------------

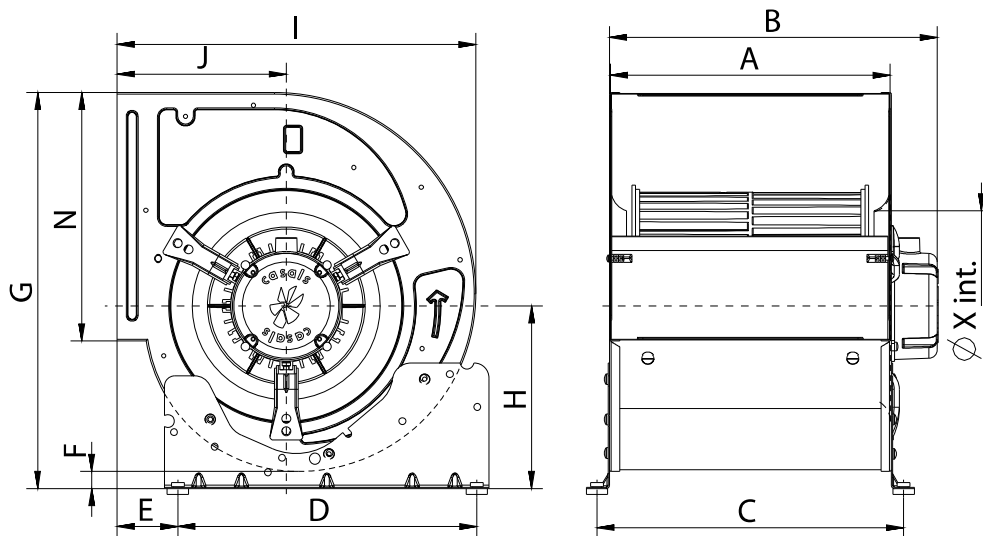
## ERP DATA

### Fan data sheet

Fan type	Centrifugal fan radial or forward blades	
Installation category	A: Outlet and Inlet free discharge	
Efficiency category	Static	
The fan has to be installed with VF	No	
Motor power (kW)	0.59	
	Fan values	ERP Requirements 2015
Max. efficiency (%)	38.41	36.8
Efficiency grade (N)	45.62	44
Pabs (kW)	0.727	
reports.flow (m <sup>3</sup> /h)	2454.37	
Static pressure (Pa)	399.11	
Speed (m/s)	1340	
Specific ratio	1.00	



## DIMENSIONS



### Dimensions (mm)

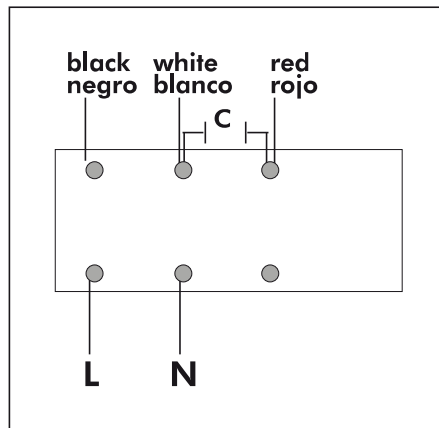
A	329	B mìn	384	C	359	D	350	E	70,5
---	-----	-------	-----	---	-----	---	-----	---	------

#### Dimensions (mm)

F	20	G	464	H	214	I	420	J	198
N	291	X	220						

#### WIRING DIAGRAM

##### SINGLE PHASE MOTOR MOTOR MONOFÁSICO



#### ACCESSORIES



**MANUAL SINGLE PHASE SPEED CONTROLLER  
REG 5A**  
REF: 960710050



**SAFETY SWITCH  
INT 25 3P A**  
REF: INT253PA



**OUTLET PROTECTION GUARD FOR FANS  
RI 10/10**  
REF: 960000406



**PROTECTION GRID FOR BD FANS, MOTOR SIDE  
RM 10 (T80)**  
REF: 960000804



**INLET PROTECTION GUARD FOR CENTRIFUGAL  
FANS  
RA 10**  
REF: 960650100



**OUTLET FLANGE FOR BD AND BV FANS  
MBI 10/10**  
REF: 251371691

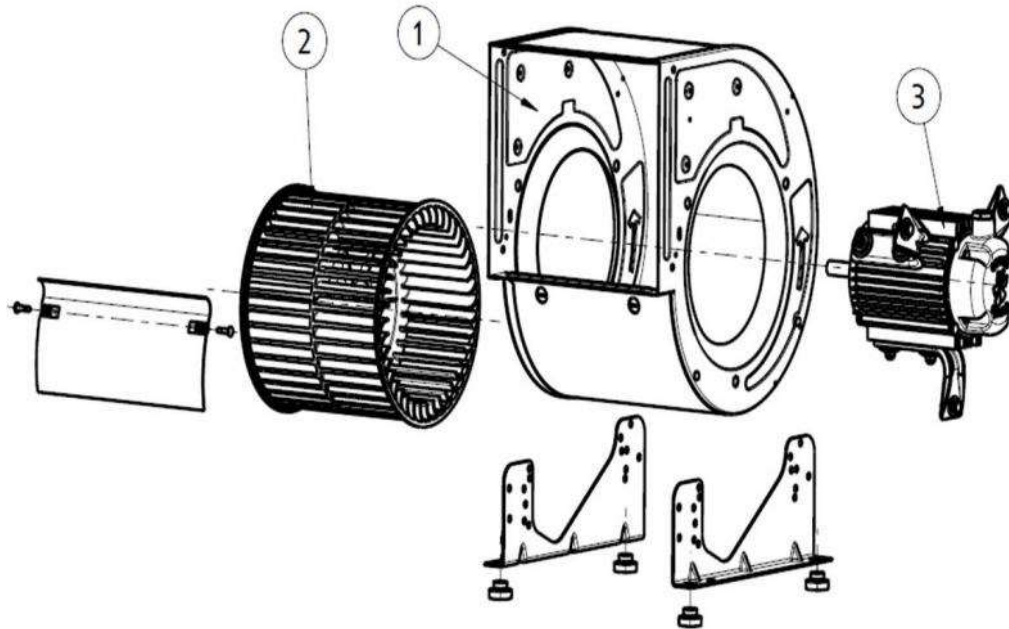


**MOUNTING SUPPORT FOR LOW PRESSURE FANS  
S 10**  
REF: 960520100



**DIGITAL ELECTRONIC CONTROLLER  
DIFFERENTIAL PRESSURE/TIME  
REG VMC 6A**  
REF: 300953906

## SPARE PARTS



	Code	Model	Qty
1	251379421	CASING BD10/10	x1
2	251379383	TURBINE PA6 BD10/10	x1
3	251329478	MOTOR+SUPPORTS BD10/10M4 STC	x1
3	720331145	MOTOR BD M4 0,59kW 230V	x1