

BD 10/8 M4 0,59kW (251340260)

GENERAL DATA



FAN DOUBLE INLET

MANUFACTURING FEATURES:

- Galvanised steel sheet housing.
- Polyamide impeller reinforced with fibreglass in models 7/7, 9/9, 10/10 and 12/12. The impeller of the rest of models are made of galvanised steel sheet.
- Double inlet forward curved impeller in all models.
- Supplied with mounting feet (included in price).
- Exclusive system Casals fixing motor and turbine fan by flexible arms silent blocks to avoid any vibration. Arms in compliance with ROHS regulations 2002/95 / EC (Restriction of Hazardous Substances in electrical and electronic equipment)
- Closed motors specially designed Casals: extruded aluminum housing, all protected inside the terminal box on the motor IP 65 protection and motor with IP54 protection and Class F insulation standard voltages: 230V 50Hz in single phase and 230/400V 50Hz three-phase.
- Single phase motors with controllable voltage speed. Three phase motors controllable using a frequency speed controller

APPLICATIONS:

Designed for assembly in equipment:

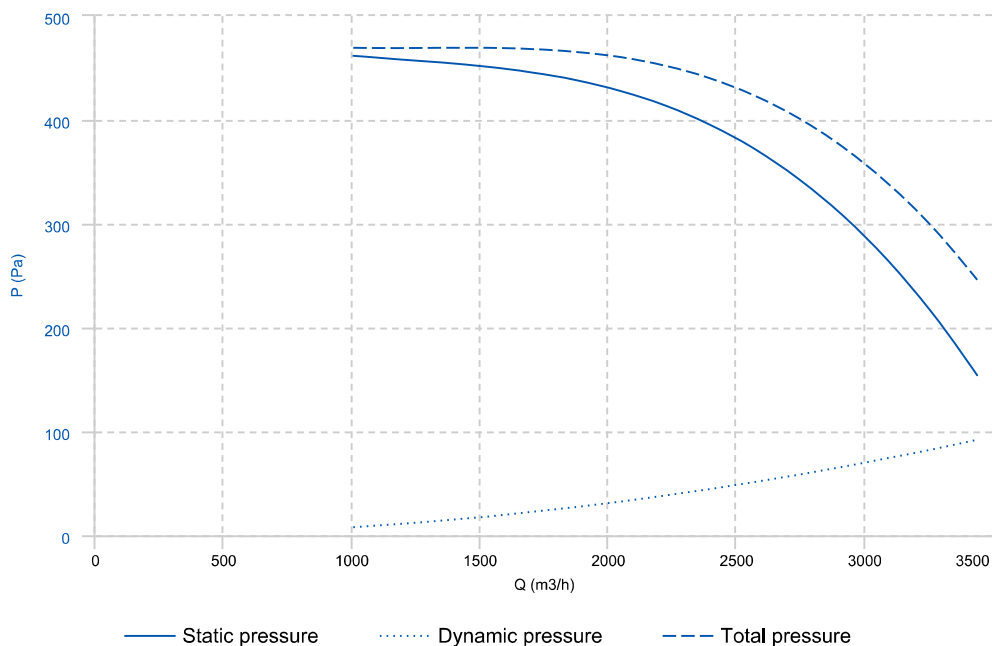
- Ventilation boxes and air handling units.
- Centrifugal heaters.
- Industrial and professional kitchen hoods.
- Maximum working temperature: 50°C for single phase motors and 60°C for three phase motors.

UNDER REQUEST

- Impeller made of galvanised steel sheet.
- MBI assembled

* While stocks last.

PERFORMANCE CURVE

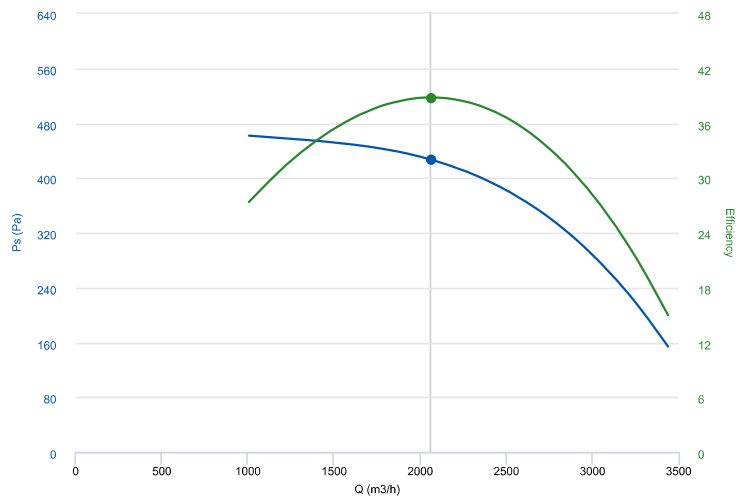


TECHNICAL DATA

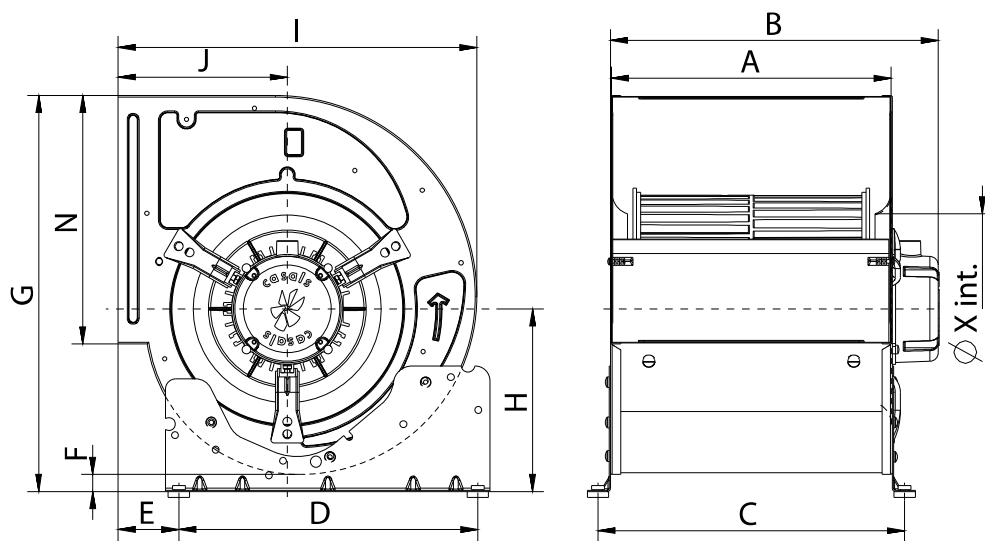
Fan					
RPM	1340	Approx. weight	22 kg	Max. Flow	3440 m3/h

ERP DATA

Fan data sheet		
Fan type	Centrifugal fan radial or forward blades	
Installation category	A: Outlet and Inlet free discharge	
Efficiency category	Static	
The fan has to be installed with VF	No	
Motor power (kW)	0.59	
	Fan values	ERP Requirements 2015
Max. efficiency (%)	38.8	36.45
Efficiency grade (N)	46.35	44
Pabs (kW)	0.64	
reports.flow (m3/h)	2064.92	
Static pressure (Pa)	426.79	
Speed (m/s)	1340	
Specific ratio	1.00	



DIMENSIONS



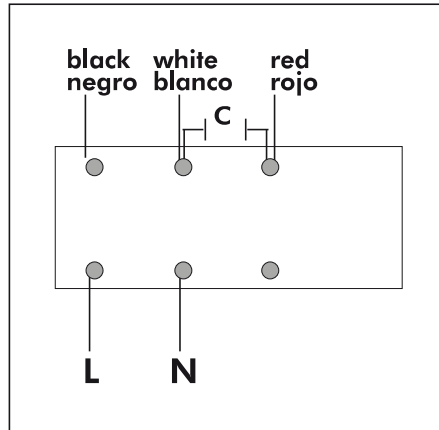
Dimensions (mm)									
A	265	B m.àx	339	C	294	D	350	E	70,5

Dimensions (mm)

F	20	G	464	H	214	I	420	J	198
N	291	X	220						

WIRING DIAGRAM

SINGLE PHASE MOTOR
MOTOR MONOFÁSICO



ACCESSORIES



MANUAL SINGLE PHASE SPEED CONTROLLER
REG 5A
REF: 960710050



SAFETY SWITCH
INT 25 3P A
REF: INT253PA



OUTLET PROTECTION GUARD FOR FANS
RI 10/8
REF: 960000405



PROTECTION GRID FOR BD FANS, MOTOR SIDE
RM 10 (T80)
REF: 960000804



INLET PROTECTION GUARD FOR CENTRIFUGAL FANS
RA 10
REF: 960650100



OUTLET FLANGE FOR BD AND BV FANS
MBI 10/8
REF: 251331691

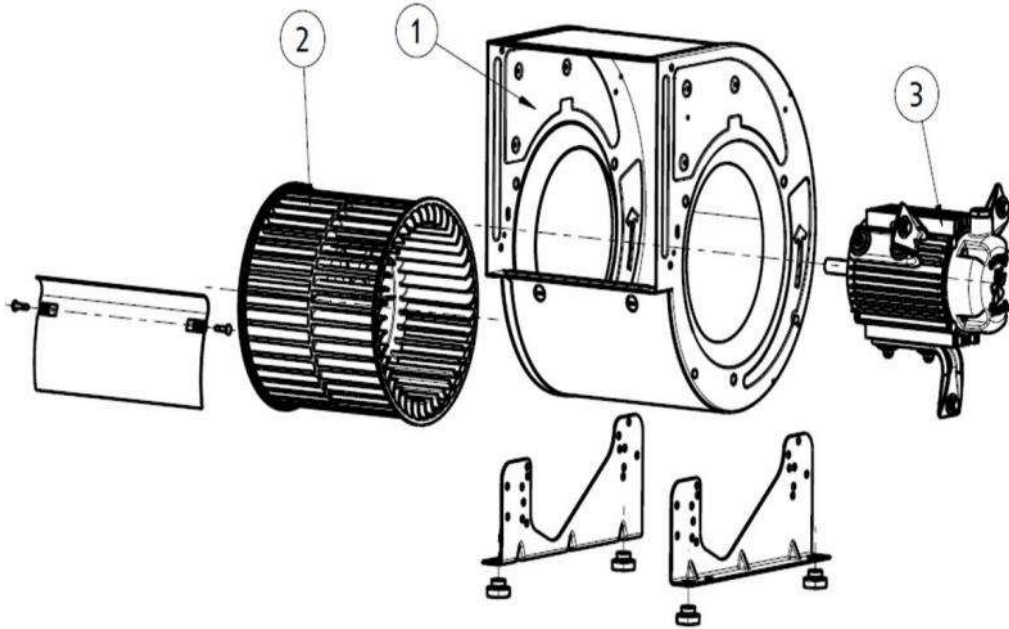


MOUNTING SUPPORT FOR LOW PRESSURE FANS
S 10
REF: 960520100



DIGITAL ELECTRONIC CONTROLLER
DIFFERENTIAL PRESSURE/TIME
REG VMC 6A
REF: 300953906

SPARE PARTS



	Code	Model	Qty
1	251339421	CASING BD10/8	x1
2	251339381	TURBINE BD 10/8	x1
3	251349478	MOTOR+SUPPORTS BD10/8M4 STC	x1
3	720331145	MOTOR BD M4 0,59kW 230V	x1