

## BD 12/12 T6 1,1kW (251520160)

### GENERAL DATA



#### FAN DOUBLE INLET

##### MANUFACTURING FEATURES:

- Galvanised steel sheet housing.
- Polyamide impeller reinforced with fibreglass in models 7/7, 9/9, 10/10 and 12/12. The impeller of the rest of the models are made of galvanised steel sheet.
- Double inlet forward curved impeller in all models.
- Supplied with mounting feet (included in price).
- Exclusive system Casals fixing motor and turbine fan by flexible arms silent blocks to avoid any vibration. Arms in compliance with ROHS regulations 2002/95 / EC (Restriction of Hazardous Substances in electrical and electronic equipment)
- Closed motors specially designed Casals: extruded aluminum housing, all protected inside the terminal box on the motor IP 65 protection and motor with IP54 protection and Class F insulation standard voltages: 230V 50Hz in single phase and 230/400V 50Hz three-phase.
- Single phase motors with controllable voltage speed. Three phase motors controllable using a frequency speed controller

##### APPLICATIONS:

Designed for assembly in equipment:

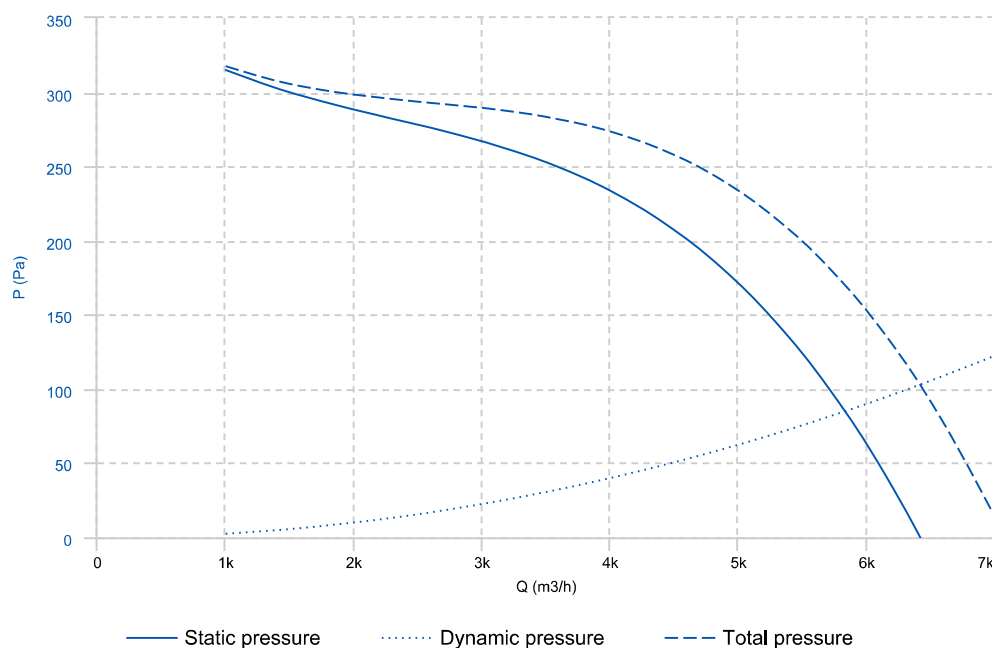
- Ventilation boxes and air handling units.
- Centrifugal heaters.
- Industrial and professional kitchen hoods.
- Maximum working temperature: 50°C for single phase motors and 60°C for three phase motors.

##### UNDER REQUEST

- Impeller made of galvanized steel sheet.
- MBI assembled

\* While stocks last.

### PERFORMANCE CURVE



## TECHNICAL DATA

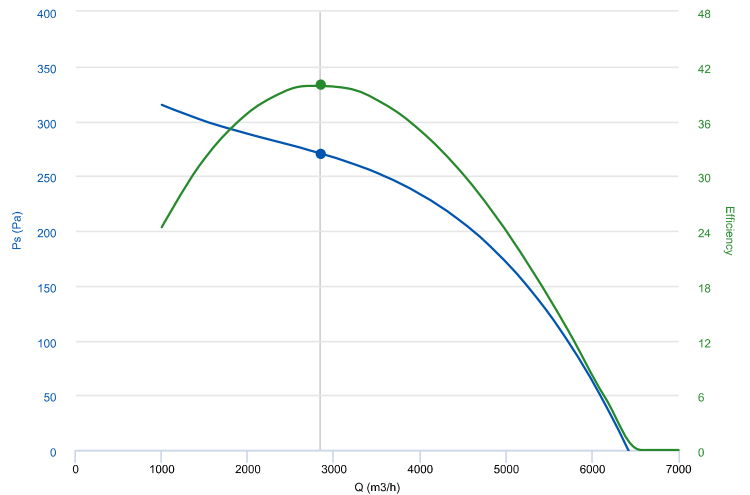
### Fan

RPM	945	Approx. weight	27 kg	Max. Flow	7010 m3/h
-----	-----	----------------	-------	-----------	-----------

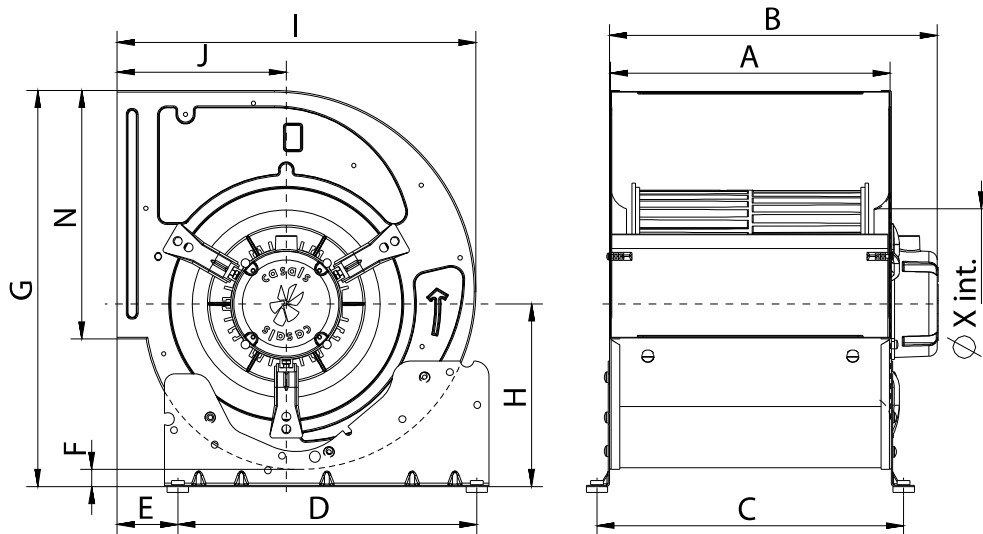
## ERP DATA

### Fan data sheet

Fan type	Centrifugal fan radial or forward blades	
Installation category	A: Outlet and Inlet free discharge	
Efficiency category	Static	
The fan has to be installed with VF	No	
Motor power (kW)	1.1	
	Fan values	ERP Requirements 2015
Max. efficiency (%)	39.95	36.09
Efficiency grade (N)	47.86	44
Pabs (kW)	0.562	
reports.flow (m3/h)	2847.69	
Static pressure (Pa)	270.65	
Speed (m/s)	945	
Specific ratio	1.00	



## DIMENSIONS



### Dimensions (mm)

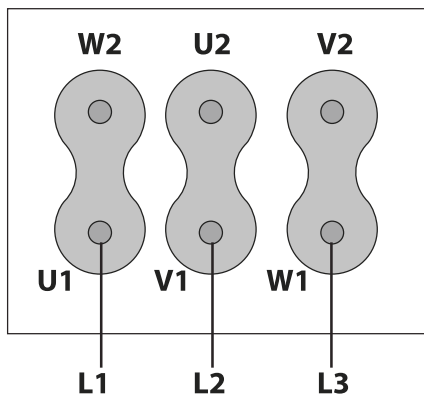
A	396	B mnx	437	C	425	D	350	E	77
---	-----	-------	-----	---	-----	---	-----	---	----

Dimensions (mm)

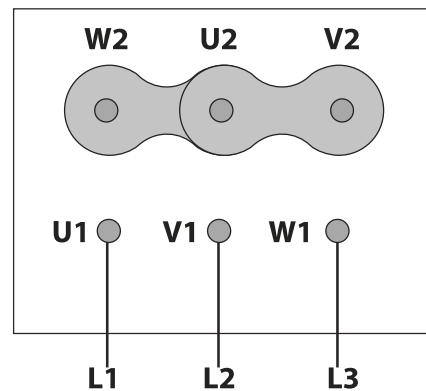
F	17	G	536	H	244	I	490	J	230
N	343,5	X	260						

## WIRING DIAGRAM

230V 



400V 



## ACCESSORIES



**SAFETY SWITCH**  
**INT 25 3P A**  
REF: INT253PA



**INLET PROTECTION GUARD FOR CENTRIFUGAL FANS**  
**RA 12**  
REF: 960670100



**PROTECTION GRID FOR BD FANS, MOTOR SIDE**  
**RM 12 (T90)**  
REF: 960000805



**FREQUENCY SPEED CONTROLLER**  
**SFC 230 I 7A \***  
REF: SFC230I007



**OUTLET PROTECTION GUARD FOR FANS**  
**RI 12/12**  
REF: 960000408



**OUTLET FLANGE FOR BD AND BV FANS**  
**MBI 12/12**  
REF: 251521691

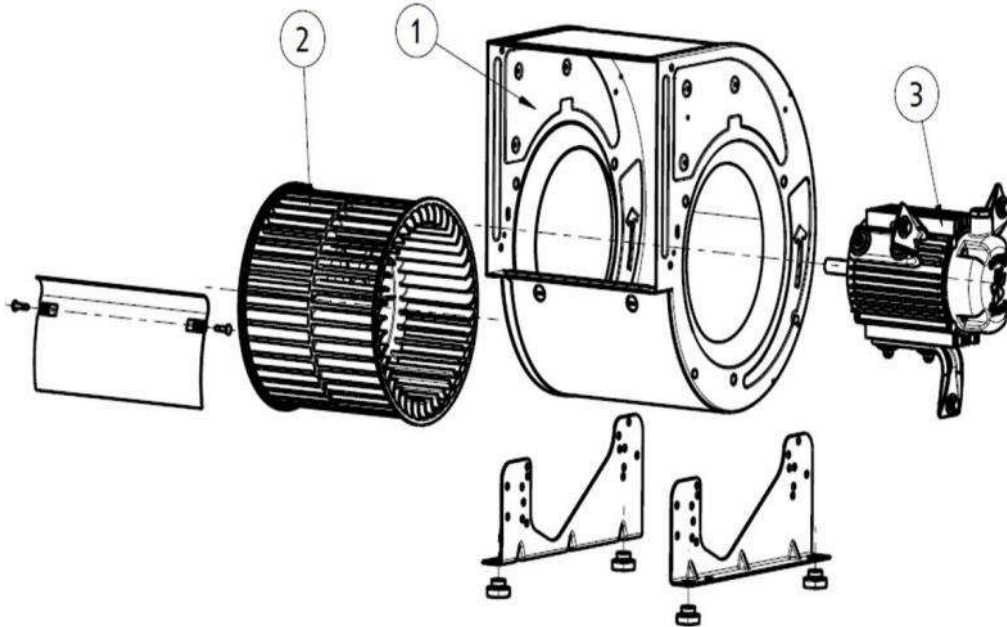


**MOUNTING SUPPORT FOR LOW PRESSURE FANS**  
**S 12**  
REF: 960530100



**FREQUENCY SPEED CONTROLLER**  
**SFC 400 III 5A \***  
REF: SFC400III5

## SPARE PARTS



	Code	Model	Qty
1	251529422	CASING BD12/12	x1
2	251529383	TURBINE PA6 BD12/12	x1
3	251529477	MOTOR+SUPPORTS BD33T6-1,5 M/C	x1
3	721081250	MOTOR BD T6 1,1kW 230/400V	x1