

BD 12/9 M6 0,76kW (251600261)

GENERAL DATA



FAN DOUBLE INLET

MANUFACTURING FEATURES:

- Galvanised steel sheet housing.
- Polyamide impeller reinforced with fibreglass in models 7/7, 9/9, 10/10 and 12/12. The impeller of the rest of models are made of galvanised steel sheet.
- Double inlet forward curved impeller in all models.
- Supplied with mounting feet (included in price).
- Exclusive system Casals fixing motor and turbine fan by flexible arms silent blocks to avoid any vibration. Arms in compliance with ROHS regulations 2002/95 / EC (Restriction of Hazardous Substances in electrical and electronic equipment)
- Closed motors specially designed Casals: extruded aluminum housing, all protected inside the terminal box on the motor IP 65 protection and motor with IP54 protection and Class F insulation standard voltages: 230V 50Hz in single phase and 230/400V 50Hz three-phase.
- Single phase motors with controllable voltage speed. Three phase motors controllable using a frequency speed controller

APPLICATIONS:

Designed for assembly in equipment:

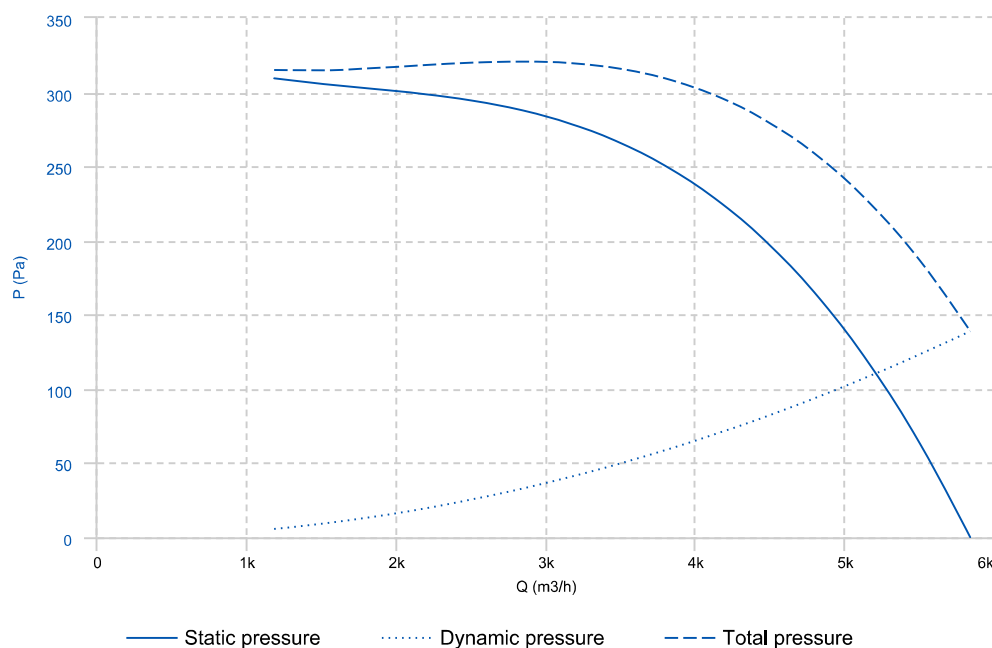
- Ventilation boxes and air handling units.
- Centrifugal heaters.
- Industrial and professional kitchen hoods.
- Maximum working temperature: 50°C for single phase motors and 60°C for three phase motors.

UNDER REQUEST

- Impeller made of galvanised steel sheet.
- MBI assembled

* While stocks last.

PERFORMANCE CURVE



TECHNICAL DATA

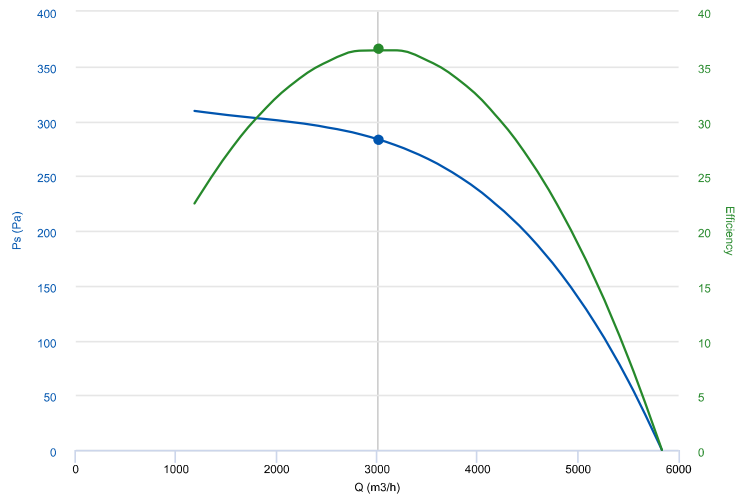
Fan

RPM	950	Approx. weight	21 kg	Max. Flow	5840 m ³ /h
-----	-----	----------------	-------	-----------	------------------------

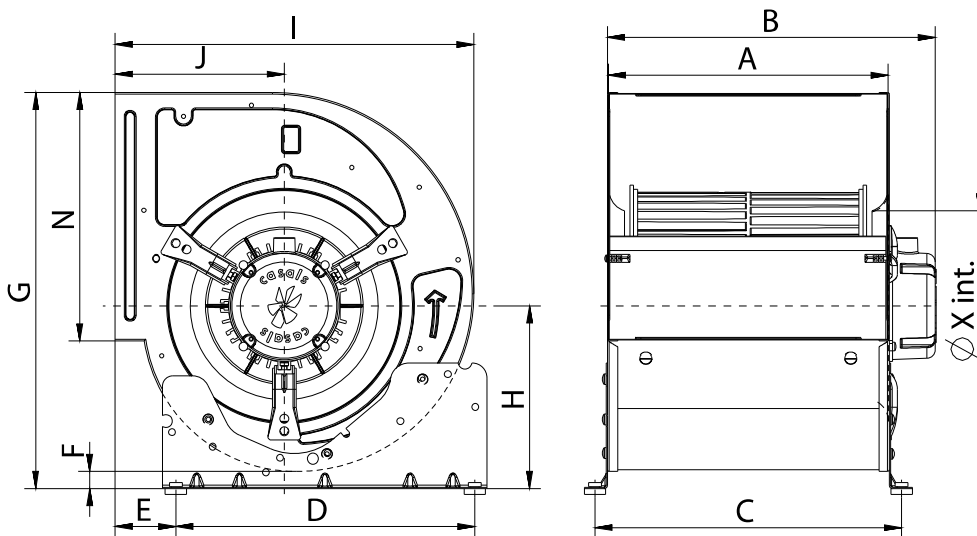
ERP DATA

Fan data sheet

Fan type	Centrifugal fan radial or forward blades	
Installation category	A: Outlet and Inlet free discharge	
Efficiency category	Static	
The fan has to be installed with VF	No	
Motor power (kW)	0.76	
	Fan values	ERP Requirements 2015
Max. efficiency (%)	36.56	36.53
Efficiency grade (N)	44.03	44
Pabs (kW)	0.659	
reports.flow (m ³ /h)	3017.28	
Static pressure (Pa)	283.33	
Speed (m/s)	950	
Specific ratio	1.00	



DIMENSIONS



Dimensions (mm)

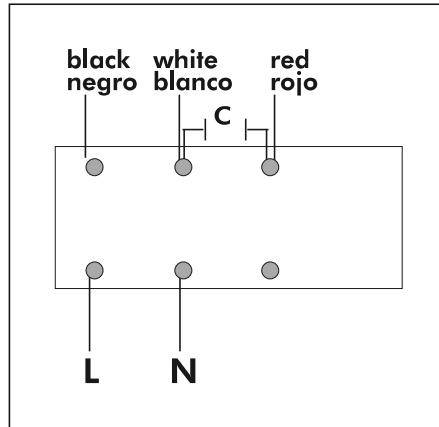
A	310	B m ^{ax}	380	C	339	D	350	E	77
---	-----	-------------------	-----	---	-----	---	-----	---	----

Dimensions (mm)

F	17	G	536	H	244	I	490	J	230
N	343,5	X	260						

WIRING DIAGRAM

SINGLE PHASE MOTOR
MOTOR MONOFÁSICO



ACCESSORIES



MANUAL SINGLE PHASE SPEED CONTROLLER
REG 10A
REF: 960710100



SAFETY SWITCH
INT 25 3P A
REF: INT253PA



OUTLET PROTECTION GUARD FOR FANS
RI 12/9
REF: 960000407



INLET PROTECTION GUARD FOR CENTRIFUGAL FANS
RA 12
REF: 960670100



OUTLET FLANGE FOR BD AND BV FANS
MBI 12/9
REF: 251601691

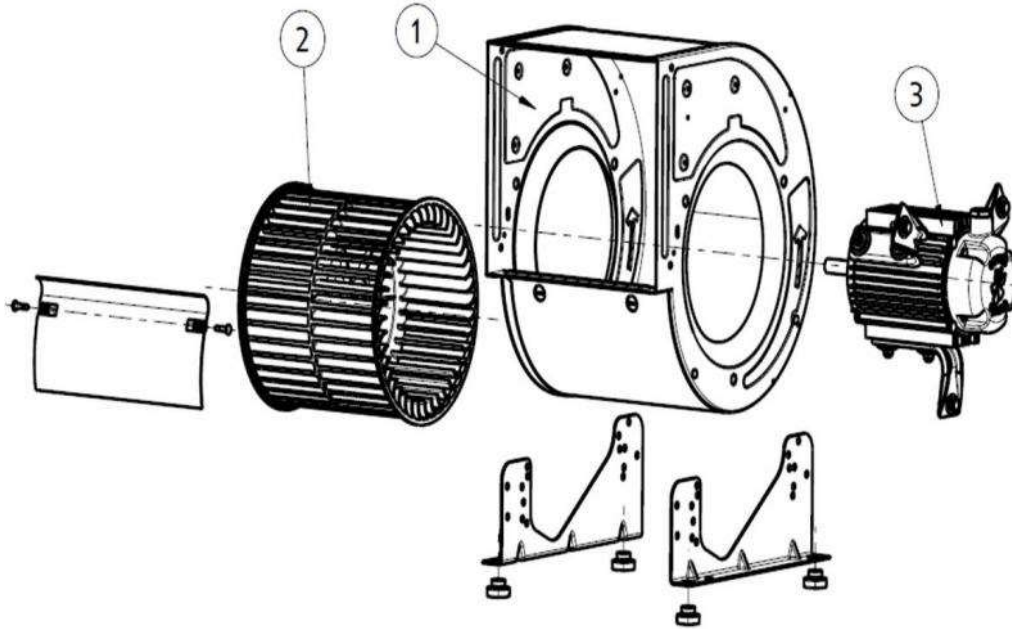


MOUNTING SUPPORT FOR LOW PRESSURE FANS
S 12
REF: 960530100



DIGITAL ELECTRONIC DIFFERENTIAL PRESSURE/TIME CONTROLLER
REG VMC 10A
REF: 300953910

SPARE PARTS



	Code	Model	Qty
1	251609423	CASING BD12/9	x1
2	251609381	TURBINE BD 12/9	x1
3	720331370M015	MOTOR 0,76kW 6P 230V MC T90	x1