

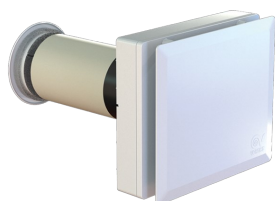
Technical Data Sheet

CODE 12441

VORT HRW 30 MONO EVO WIFI



Decentralised heat recovery units



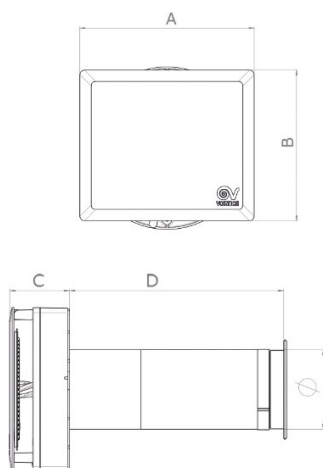
Certifications



TECHNICAL AND PERFORMANCE DATA

Absorbed Current max (A)	0,04	Max delivery at max speed (m ³ /h)	38
Absorbed Power max (W)	5	Maximum thermal efficiency (%)	90
Frequency (Hz)	50-60	Potenza sonora Lw [dB (A)] - max vel	66,8
Insulation Class	II ^o	Potenza sonora Lw [dB (A)] - min vel	36,6
Max ambient temperature for continuous operation (°C)	30	Pressione sonora Lp [dB (A)] 3m - med vel	32,0
Nominal Diameter (mm)	100	Pressure - 1st speed (mmH2O)	1
Voltage (V)	220-240	Pressure - 1st speed (Pa)	10
Weight (Kg)	3,10	Pressure max - max speed (mmH2O)	13,7
Delivery 1st speed (l/s)	1,7	Pressure max - max speed (Pa)	130
Delivery 1st speed (m ³ /h)	6	Sound power Lw [dB(A)] - mid speed	49,5
Max delivery at max speed (l/s)	10,5	Sound pressure level Lp [dB (A)] 3m - max speed	49,2
		Sound pressure level Lp [dB (A)] 3m - min speed	19,1

DIMENSIONS



Diametro Ø (mm)	97
Size A (mm)	231
Size B (mm)	200
Size C (mm)	73
Size D (mm)	260

PER INFORMAZIONI:

Servizio al Cliente: tel +39 02 90699395 premendo 1 dopo messaggio registrato (consulenza su prodotti e impianti)

Pre & Post Vendita: fax +39 02 90699302

Email prevendita: prevendita@vortice-italy.com

Technical Data Sheet

CODE 12441

VORT HRW 30 MONO EVO WIFI



Decentralised heat recovery units

DESCRIPTION

ACCESSORIES



MWS D.100

Code 21883



WA Ø 100

Code 21884



KIT FTR ISO COARSE 65% (G3) D.98X10

Code 21891



TUBO PVC D.100 L=700 (HRW 30)

Code 21879

PER INFORMAZIONI:

Servizio al Cliente: tel +39 02 90699395 premendo 1 dopo messaggio registrato (consulenza su prodotti e impianti)

Pre & Post Vendita: fax +39 02 90699302

Email prevendita: prevendita@vortice-italy.com